



Smart Workforce Safety & Productivity

Improve Safety, Throughput, Efficiency, and Costs!

Workforce Challenges

Safety



Do we have real-time man-down detection?



Where are the missing persons during an emergency evacuation?



Who has not completed safety or skills training?



How to securely manage access to restricted Locations?



Who are high safety risk individuals in your operation?

Productivity



Is the project on schedule?
Is the project on budget?



What are the actual labor hours/costs vs. planned?



What is the actual productivity vs. planned?



How much work was completed today?



What are the cost accounts and deviations from planned?



Solutions for Creating Safe and Productive Working Environment

Improve safety, throughput, efficiency, and costs!





Safety First



Man-down (Fall) Detection

Advanced BLE with built-in Motion Sensor identifies a fall in real-time. It transmits the time, location, name and picture of the affected person to the safety personnel.



SOS/Panic Notification

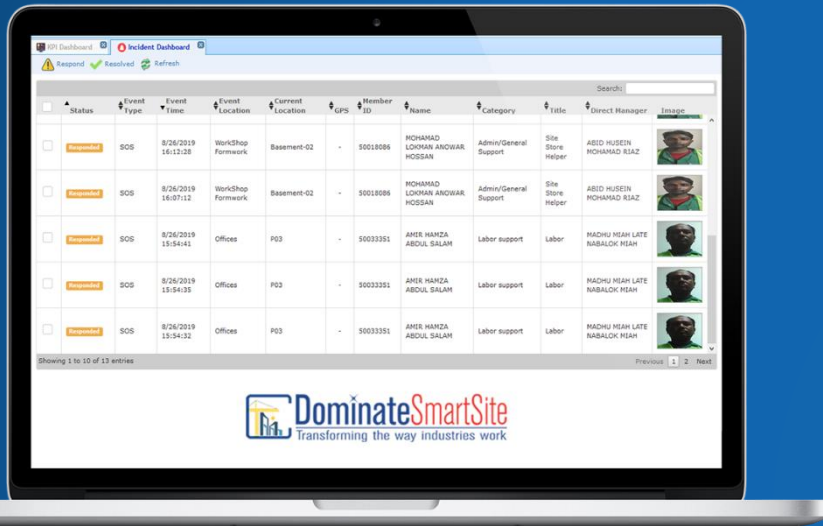
The BLE personnel tags are equipped with SOS/Panic button. The push-button allows the person in stress to alert the safety team of an urgent situation. It transmits the time, location, name and picture of the person to the safety personnel.



Safety Training

- Comprehensive safety and skills training.
- Auto re-training notifications.





Incident Dashboard

- Real-time incident dashboard provides the bird-eye view of all the ongoing incidents at the facility. Each incident is recorded with “Event Location” and “Current Location” of the affected persons.
- It segregates the incidents by incident type and allows the safety personnel to respond to an incident and close it after investigation.
- Complete history reports are available for future analysis.

Restricted Location Control

- Detects and identifies anyone that is restricted from arriving at an unauthorized location.
- Alerts Security and safety personnel in real-time.

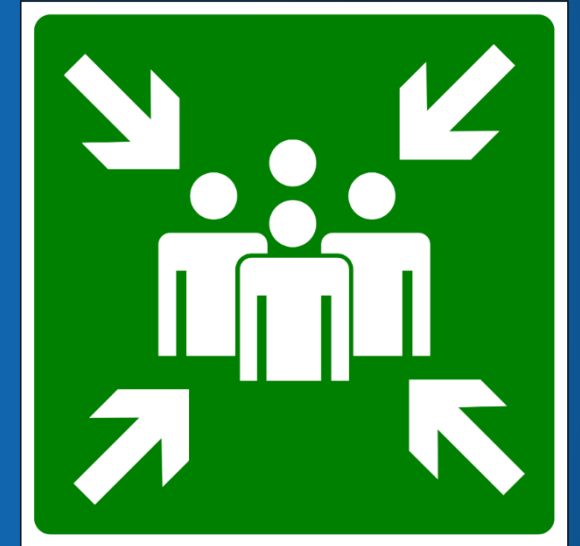


Mustering & Emergency Evacuation System

Improve Site's Evacuation Measures

Makes safe and timely evacuation the cornerstone of your emergency management plan.

- Wireless management of site emergency notifications.
- View people present at each assembly area (safe zones).
- Know precisely who is missing and their last reported location and time.
- Real-time mobile dashboards continuously update with the latest data.



Real-time Alerts & Notifications

Watches your operation without you watching it!

Real-time alerts & notifications bring accountability, validation and security at every level.

- Rule-based Alerts
- Site Messaging Notifications
- Site Mass Alerts
- Manage Restricted Location Access
- Actions (Pop-up message, SMS, and email)

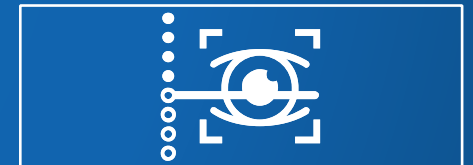


Integrations

Energize your Existing Applications with the power of IoT!

Built-in integration with Oracle Primavera P6, MS Project, MS Power BI, and extensibility features enable you to extend your business applications with real-time insights from streaming IoT data to improve efficiency and derive more value from your existing business applications.

- Oracle Primavera P6
- Microsoft Project
- Microsoft Power BI
- Extensive Rest APIs
- Import/Export Wizard



End-to-End Security

We Take Security Seriously!

Through unique device identification, system provides secure environment of trusted devices and communications.

Authentication is enforced prior to communication for proof-of-origin of data. Transport-level security helps prevent corruption. Role-based and user-based access control manages cloud and mobile access.

- Role and user-based access control
- HTTPS point-to-point connection
- Message integrity, confidentiality and replay protection
- Node authenticity
- AES 128 counter mode
- OMAC1 message integrity
- Transport-level security



Technology Agnostic Industrial IoT Devices

RFID



GPS Devices



BLE



Barcode



Sensors



Plug & Play Industrial IoT Hardware

IoT That's Ready to Use.

Ready to Build.

Ready to Scale.

Pre-configured IoT hardware designed for harsh industrial environment without a need for AC power or network connection enables your operation to be IoT ready within days.

- No AC Power Required. Runs on long-lasting Battery (12 months).
- No Internet Connection Required (Creates its Own BLE Mesh Network).
- Quick Installation and Expansion (less than 2 minutes per device).
- Read Range of Up to 100 Meters (329 ft).
- IP67 Ratings (water & dust proof).
- Man-down (fall detection).
- SOS button for emergency alert notification.
- High Availability with No Single Point of Failure.

Examples of our IoT Hardware

For full list, please visit <http://dominatesmartsite.com/iot-hardware>

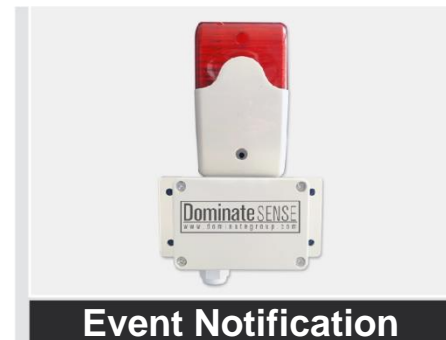
Personnel Tags
BLE-based



Personnel Tags
BLE-based



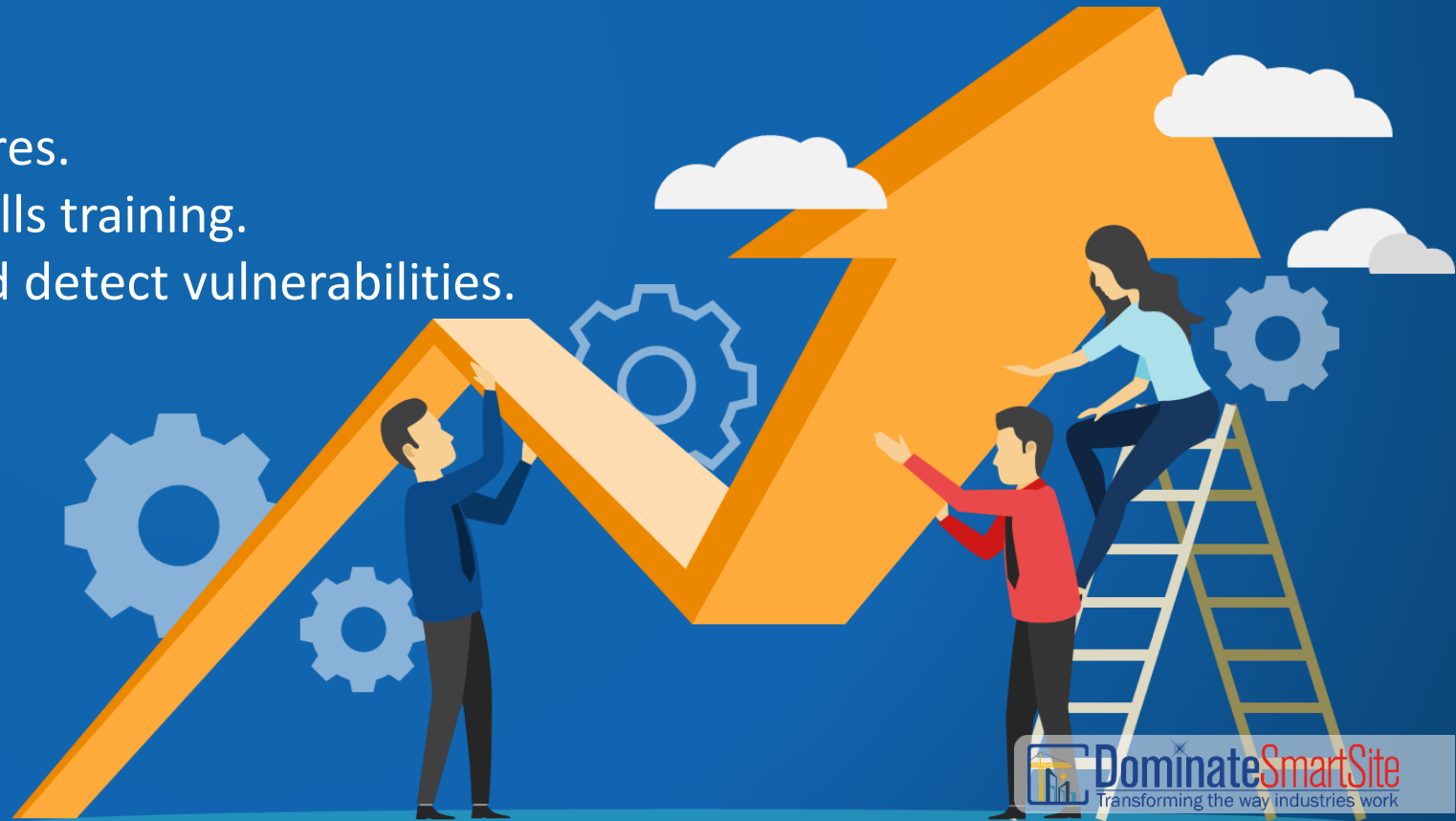
BLE Mesh Network



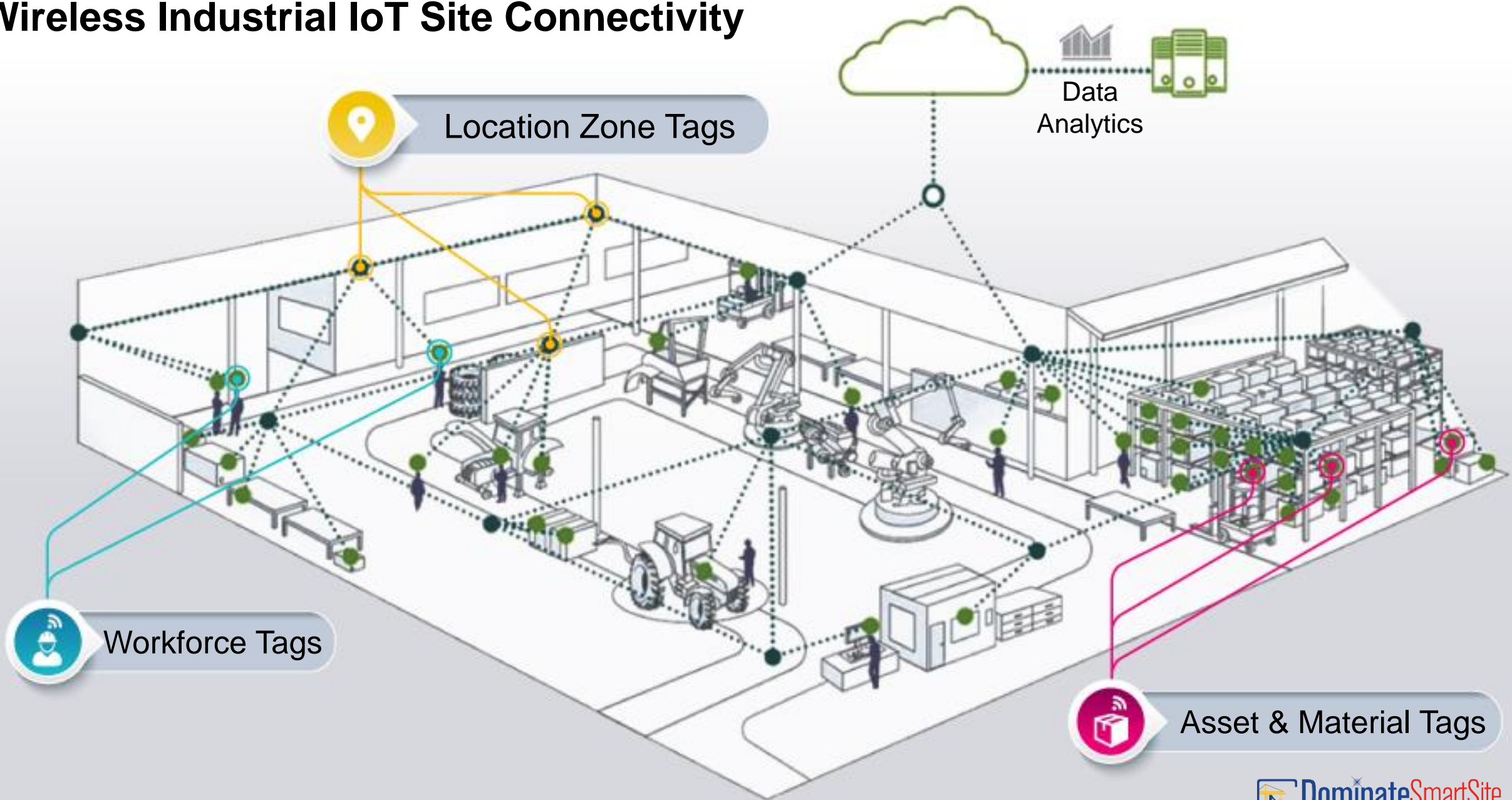
Collaborate with **multiple teams** across **multiple sites** to better manage productivity, safety, resources, etc.

Benefits:

- Ensure regulatory compliance.
- Mitigate risks.
- Improve your site's evacuation measures.
- Improve your workforce safety and skills training.
- Analyze data in real-time to assess and detect vulnerabilities.
- Enhance discipline and accountability.



Wireless Industrial IoT Site Connectivity



Why Dominate Industrial IoT?

Key System Features

- End-to end IoT Solutions or enable your existing applications with IoT.
- SaaS or on-premise installations.
- Quick learning curve with no operation disruptions.
- Plug & play, pre-configured and ready to go IoT hardware.
- Technology agnostic with quick DIY hardware installation.
- Mobile-enabled (iOS & Android).
- End-to-end security.

Zero Investment & Risks

- Low-cost bundled hardware & software monthly subscriptions.
- Accelerate time to value with no upfront costs or CAPEX.
- No long-term contract.

Worry-free Support

- Online knowledge-base access.
- Remote dedicated consultants.
- On-site full-time dedicated consultants.
- Free data migration.

Our Goal

Partner with our clients to transform their organizations in the ways that matter most to them.

This means embedding digital analytics and design into core processes and mind-sets; building capabilities that help organizations and people to thrive in an ever-changing context; and developing excellence in execution to ensure that actions translate into outcomes, quickly and sustainably.





- +1-678-226-9789
- www.DominateSmartSite.com
- sales@DominateSmartSite.com
- facebook.com/DominateSmartSite
- linkedin.com/company/dominatesmartsite

