



DominateSmartSite
Transforming the way industries work

Smart Asset Management (EAM)

Begin Your Digital Transformation

Table of Contents

1 Smart Asset Management (EAM)

2 Plug & Play IoT Hardware

3 Why Dominate Smart Site?



1

Smart Asset Management (EAM)

Smart Asset Management (EAM)

Improve Asset Reliability, Availability,
Visibility and Costs!



Smart Site Platform

A Product of Dominate SmartSite

Asset Management Challenges

- Do you know what assets you have, how many, and where they are in real-time?
- Do you have visibility of your asset utilization? Do you know which assets are idle?
- Do you know the true Total Cost of Ownership of your assets?
- Do you have full traceability of the chain-of-custody of your assets?
- Are you able to allocate equipment to specific projects?
- Can you easily manage equipment planning and resource allocation?
- Are your asset audits slow and time-consuming? Do you find discrepancies in your audits?
- Are you in compliance with your asset management regulations?



Solutions for Achieving Greater Value, Reducing Costs, Eliminating Risks & Optimizing Operation's Efficiency

Smart Asset Management

Improve asset reliability, availability, visibility and costs!

Enterprise Asset
Management (EAM)



Maintenance
Management (CMMS)



Alert &
Notification



Smart IoT
Sensors



Real-Time
Location System



Inventory
Tracking



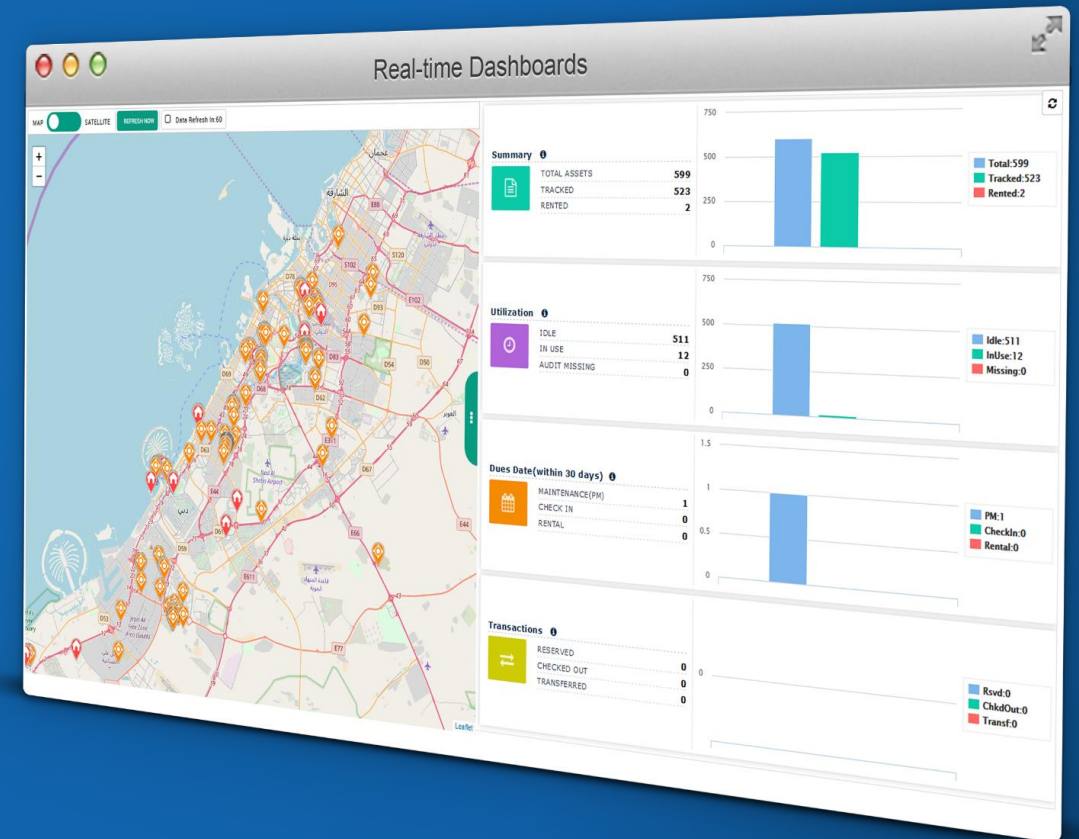
Cradle-to-Grave Asset Management

Manage & Track Your Assets. Indoor or Outdoor, Anywhere, Anytime.

Comprehensive asset management platform with wireless IoT capabilities for managing your capital assets, equipment and tools.

















You can also supercharge your existing application with the power of wireless IoT.

- Asset Type with unlimited Attributes
- Asset Check-out/In, Transfer-Out/In
- Asset Audits (Counts, Misplaced, Missing, Search)
- Asset Reservation and Scheduling Management
- Asset Rental Tracking



Tools & Kit Tracking

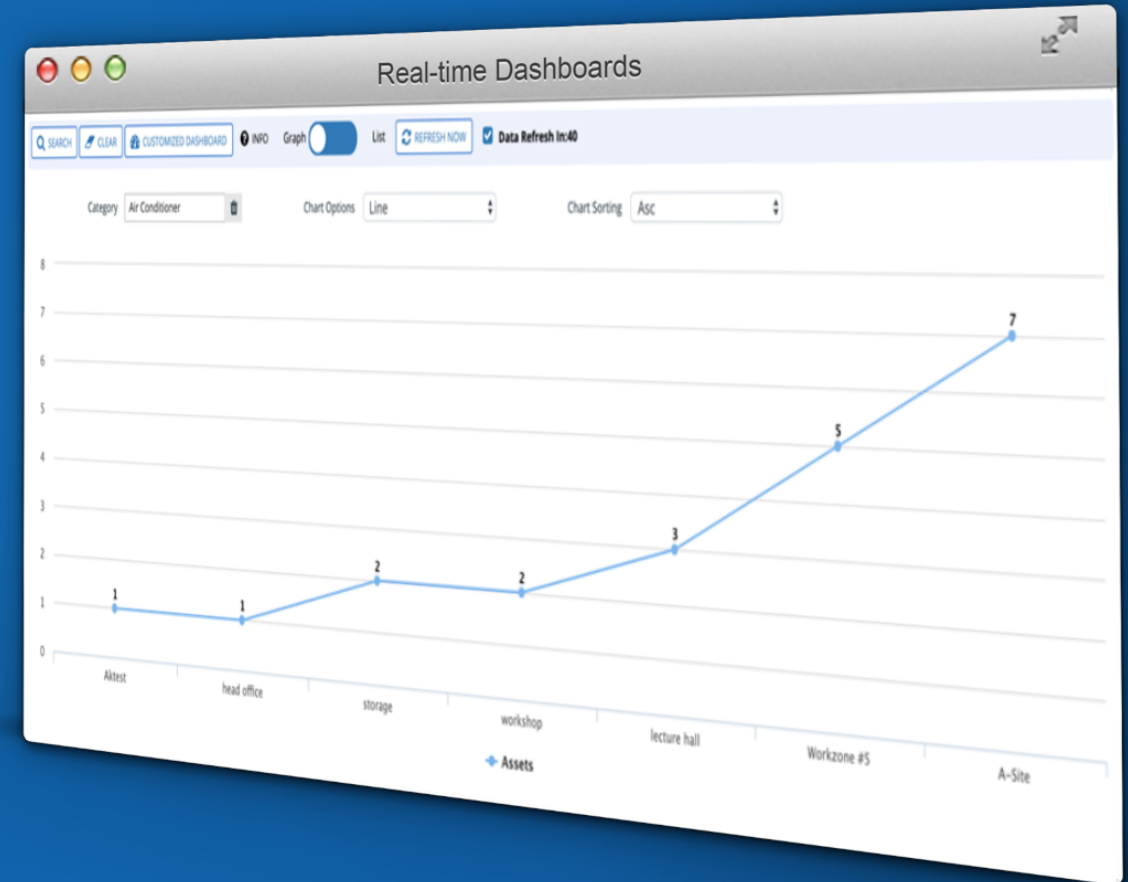
[View Images](#) [Cancel](#)

 0023 Power Tools	 0024 Power Tools	 0025 Power Tools	 0026 Machinery
 0027 Hand Tools	 0028 Hand Tools	 0029 Power Tools	 0030 Power Tools
 0031 Power Tools	 0032 Hand Tools	 0033 Machinery	 0034 Machinery
			

Asset Check-Out/In & Transfer-Out/In

Full chain of custody visibility.

- Quick asset check-out process.
- Check-out assets to a user, customer or project.
- Cost tracking of checked-out assets.
- Email due date reminders to custodians.
- Securely transfer-out/in assets to/from facilities.



Asset Audit

Quick and accurate asset audit.

- Eliminate loss of productivity chasing lost or misplaced assets.
- Comply with your asset management regulations.
- Know missing and misplaced assets in minutes.



Asset Reservation & Rental Management

Reduce CAPEX and expand your resources.

- Manage high valued assets efficiently and reduce rental costs.
- Unlimited reservations against an asset.
- Rental Management with due date reminders.



Real-time Visibility Like Never Before!

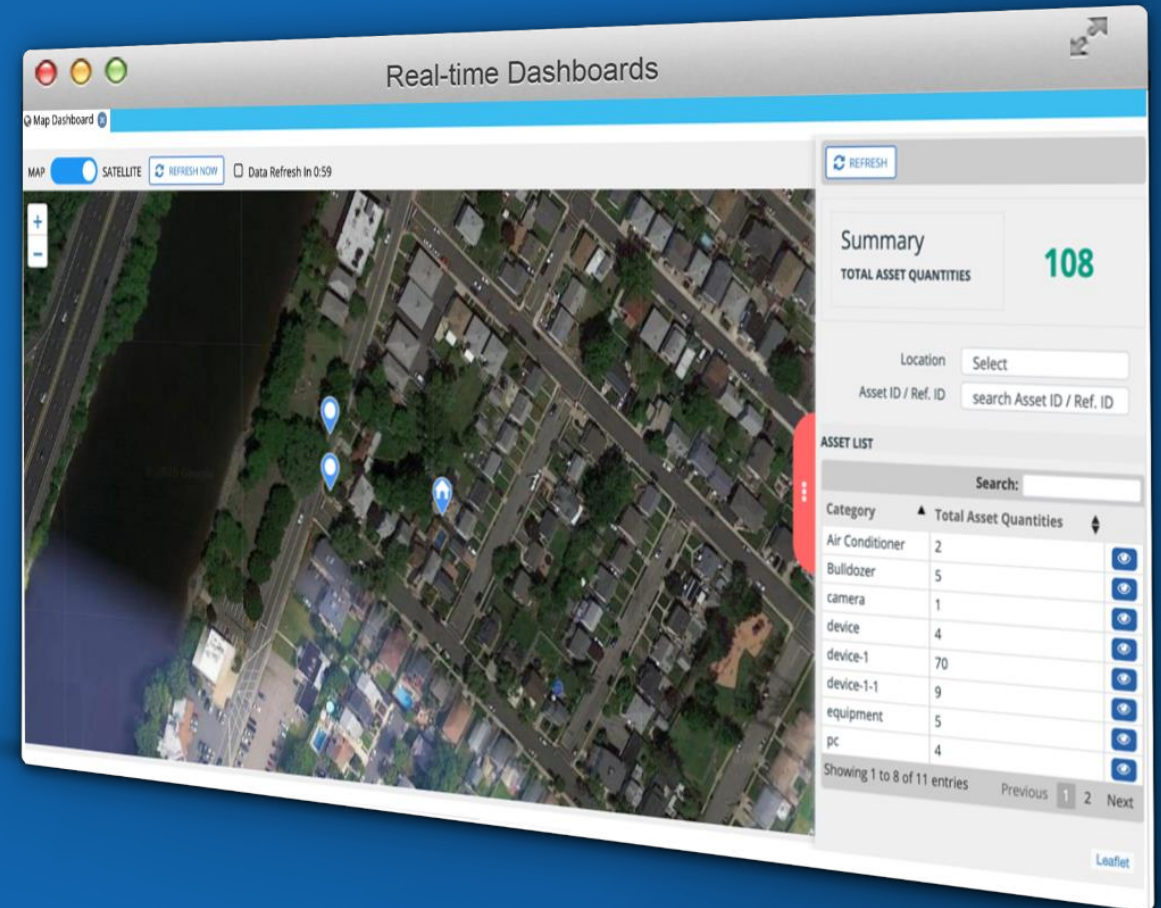
- What assets are currently available onsite?
- Where are they located at any time?
- Are they underutilized, or fully utilized?
- How much are they costing you?
- What assets & resources are available for allocation?
- Who is checking the asset in or out?
- How many assets are reserved for later use?
- How best to optimize asset utilization across projects?



Real-time Location System (RTLs)

Know What Asset You Have,
How Many You Have,
Where They Are In Real-Time

- Live Indoor & outdoor asset visibility
- View your assets and fleet on your site map or world map.

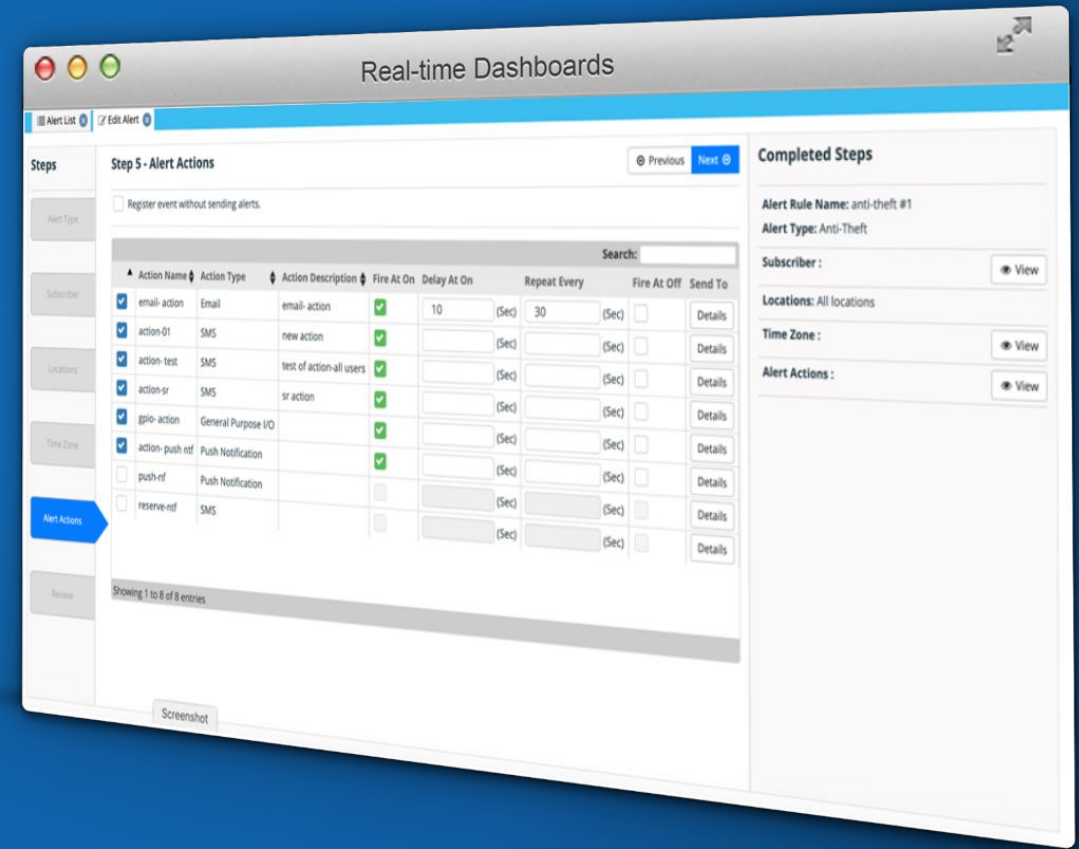


Real-time Alerts & Notifications

Watches Your Assets Without You Watching It!

Real-time alerts & notifications bring accountability, validation and security at every level.

- Rule-based Alerts
- Notifications
- Reminders
- Manage Restricted Asset Movements
- Actions (Pop-up message, SMS, Email)



Mobile Field Management

**Mobility connects You to Assets,
Anywhere, Anytime!**

Smart phones and tablets help you achieve the full spectrum of asset management and maintenance capabilities in the palm of your hand.

- Android & iOS
- On-line or Off-line Working Modes
- Live Geo-location Tracking
- Live Dashboards



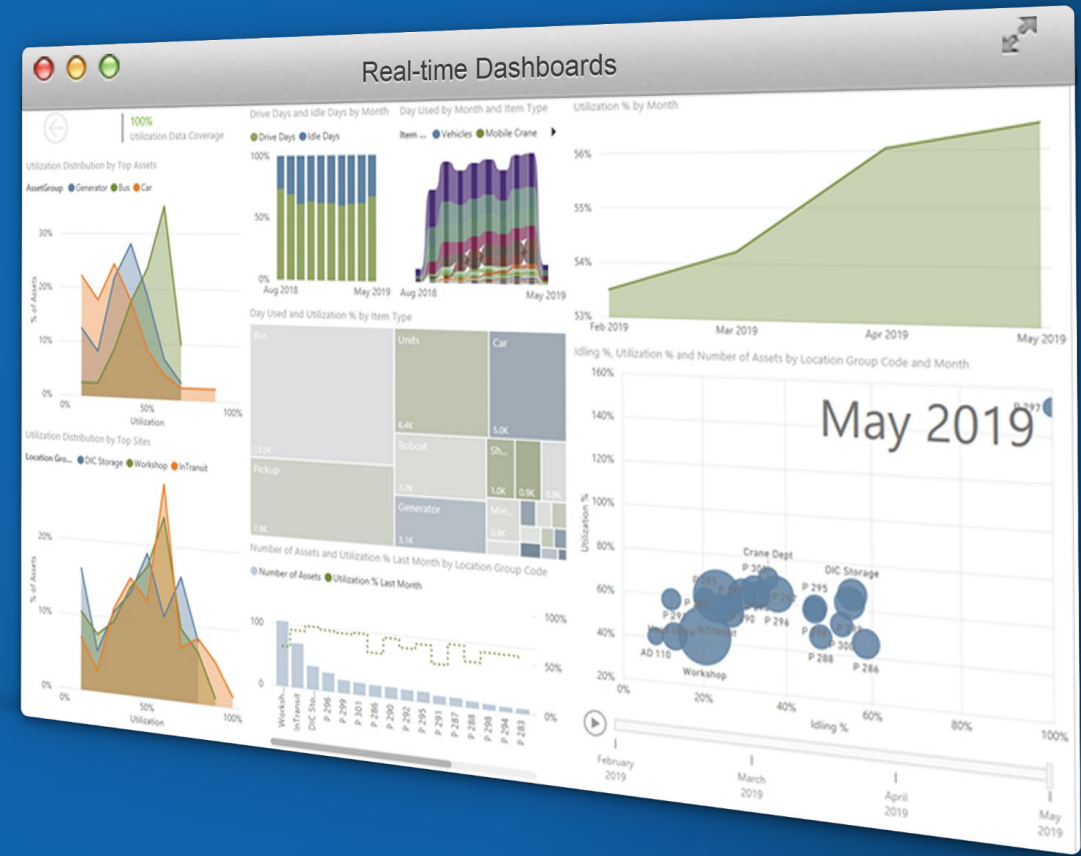
Analytics

Converting Your Asset's Raw Data Into Actionable Intelligence!

Utilize BI database to design your own customized reports any way that fits your requirement.

Analyze data gathered from a wide variety of sources to uncover patterns and trends that will deliver actionable insights to your operation.

- Live Dashboards
- AI-powered Insight
- Asset Utilization
- Asset Health
- Audit Analysis



Document Control

100% Paperless, 100% Digital.

Consolidate your documents, images, videos, transaction records, certifications, inspection approvals in a single digital portal, accessible from any location, on any device, by all authorized users across the enterprise.

- O&M manuals
- Drawings, Schematics
- 3D models, BIM
- Images, Videos
- Vendor Submittals



Inventory & Spare Parts Tracking

The Right Spare Parts at the Right Place and Time!

Control spare parts planning and availability to mitigate risks and boost operational performance.

- Inventory & Spare Parts
- Inventory Level Tracking
- Inventory Locations
- Inventory Audit
- Low Stock Alerts



Integrations

Supercharge Your Operation With the power of IoT!

Extend your operation with real-time insights from streaming IoT data to improve efficiency and derive more value.

- Microsoft Power BI
- IBM Maximo
- Import/Export Wizards
- Extensive REST APIs
- IoT Sensors, GPS, LoRa and RFID
- Condition Monitoring IoT Hardware



End-to-End Security

We Take Security Seriously!

Through unique device identification, system provides secure environment of trusted devices and communications.

Authentication is enforced prior to communication for proof-of-origin of data. Transport-level security helps prevent corruption. Role-based and user-based access control manages cloud and mobile access.

- Role and user-based access control
- HTTPS point-to-point connection
- Message integrity, confidentiality and replay protection
- Node authenticity
- AES 128 counter mode
- OMAC1 message integrity
- Transport-level security



Data



Real-time dashboards providing information about **Asset Audit, Asset Count, Transactions, Due Dates**, etc. to make confident decisions based on actual data.

Example

Asset Audit

7 staplers were allocated to the Zone B. Today, system is showing one is missing.



Insight



Up-to-date reports providing insights into **Asset Maintenance, real-time demand & supply gaps** to drive confident, proactive & data-driven decisions.

Example

Maintenance & Supply Gaps

At the rate, the power generator "Asset01" is working; it needs to be serviced in 15 days. Spare part inventory at site A is low on spark plugs. This will affect PM service of "Asset02" & "Asset03" which are due next week.

Action



Advanced analytics providing recommendations for better **management of assets**

Example

Recommendations for Asset Management

We need to purchase several new drills. To make a good purchasing decision, it is necessary to view all details of previous drills' lifecycle – from acquisition to disposal. Did they last as long as expected?



Real-Time Visibility

1

Example

Asset Count Presently, there are 5 air compressors available on Site A.

Idle Assets Currently, there is one idle generator on Site C.

Asset Services There is a PM due date for Asset008 next week. Its current Odometer shows 12330.

Check-in/out John from Trade B's group has checked out 2 saw drills yesterday.

Service Due Dates The excavator working in Zone 3 should be inspected for proper functioning tomorrow.

Notifications The rented asset with tag ID 120031 must be returned in two days.

Asset Audit There are 3 assets missing from Site A.



Real-time Insights

2

Example

Asset Management What kinds of alerts have been issued for critical assets recently? Restricted movement? Anti-theft?

Schedule Issues Excavation work in location A was planned to be done in 150 hours. The group has been working for almost 200 hours now, & it is not finished yet. This is mainly due to excavators breaking down repeatedly. If things keep going like this, it is reasonable to expect one week of delay.

Cost Issues It was planned to spend no more than \$11,000 for renting heavy machinery, but at the end it costed \$19,000. Why did they have to keep the machine for a longer duration of time?

Asset Productivity Ratios We spent \$4500 on assets to complete task A. Our revenue was \$2920. This means for each dollar we spent, we earned \$0.65 with Asset Productivity Ratio of 65%.



Advanced Analytics

3

Example

Asset Optimization Aging assets are hindering the project's progress. Perhaps we need to replace some of them with new ones.

Financial Decisions There are 5 underutilized generators on site A. Should we transfer or sell them?

Financial Advices The asset with tag ID 120086 has been serviced 5 times during the past 2 months at a total cost of \$3400. Perhaps we need to replace this asset with either a new one or a rental.

Tactical Advices Company's profit margins are being gobbled up by underutilized assets. This is primarily because purchased assets are used for a short while and then left aside and forgotten. Perhaps we need to rent assets instead.

Use Data to Realize Efficiencies, Minimize Costs, Control Risks & Improve Asset Performance.

- Gain complete visibility and control of all equipment and assets across your facility.
- Leverage data automation for asset allocation analysis and reporting.
- Eliminate the need to search for lost or misplaced items.
- Improve asset availability and cut down on time wasted for asset tracking and management.
- Automate asset management, including check-in/check-out, auditing, and reporting.
- Reduce asset-related operating costs, extend asset life, and improve ROA (return on assets).
- Optimize asset utilization within and across projects.



The background is a solid blue color with a complex, abstract geometric pattern. It features a large, multi-faceted, low-poly shape in the center, resembling a stylized mountain or a modern building facade. This shape is composed of many small triangles and quadrilaterals. Several thin, white lines with small square endpoints are scattered across the background, some connecting different points and others extending from the edges towards the center. The overall aesthetic is clean, modern, and technological.

2

Plug & Play IoT Hardware

Technology Agnostic Industrial IoT Devices

RFID



GPS Devices



LoRa



BLE



Sensors



Plug & Play Industrial IoT Hardware

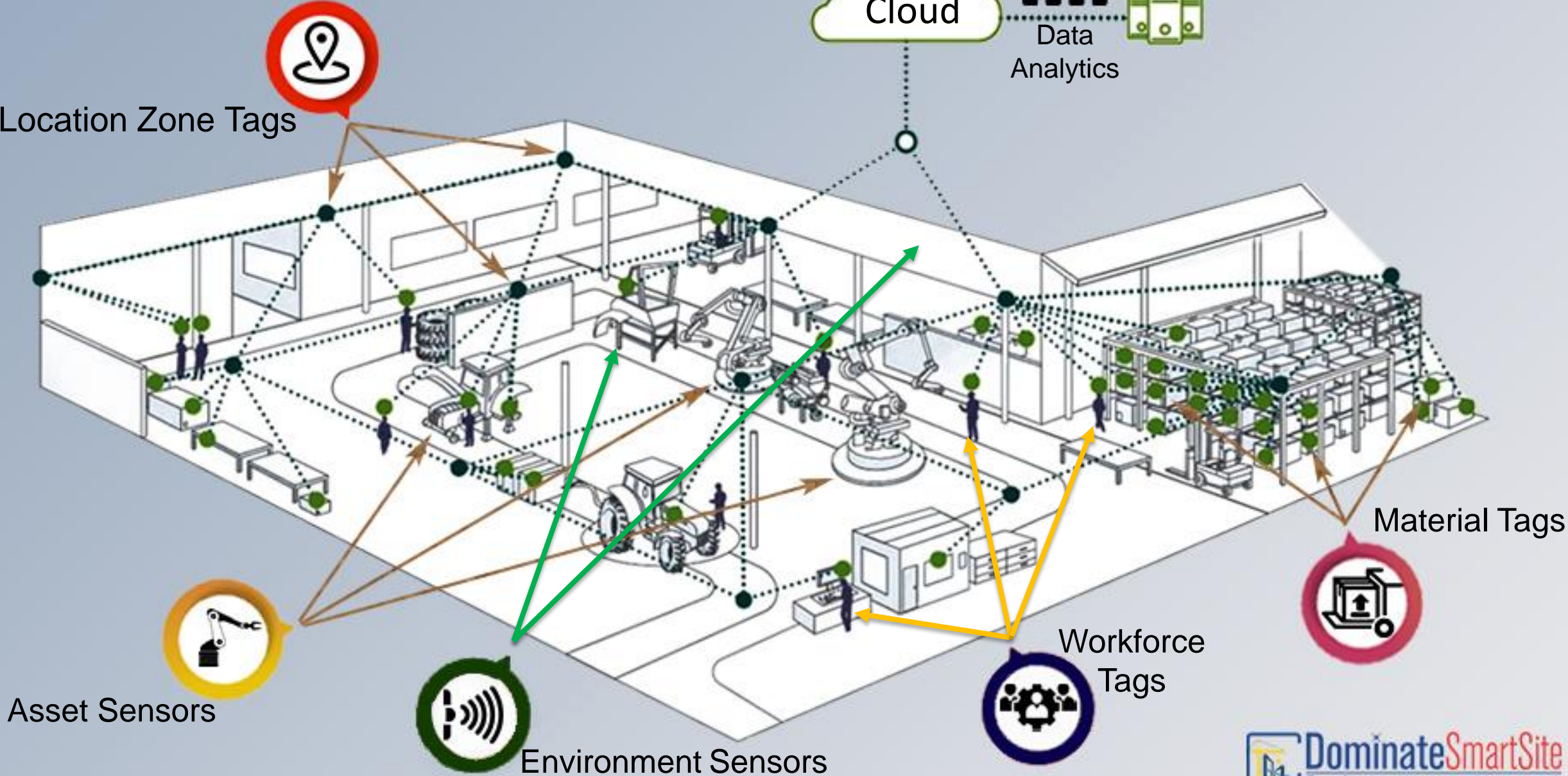
**IoT That's Ready to Use.
Ready to Scale.**

Pre-configured IoT hardware designed for harsh industrial environment without a need for AC power or network connection enables your operation to be IoT ready within days.

- No AC Power Required. Runs on long-lasting Battery (12 months).
- No Internet Connection Required (creates its own BLE mesh network).
- Quick Installation and Expansion (less than 2 minutes per device).
- Read Range of Up to 100 Meters (300 ft)
- IP67 Ratings (water & dust proof)
- High Availability with No Single Point of Failure



Wireless Industrial IoT Site Connectivity



Plug & Play Industrial IoT Devices



Temperature/Humidity
Sensor (BLE)



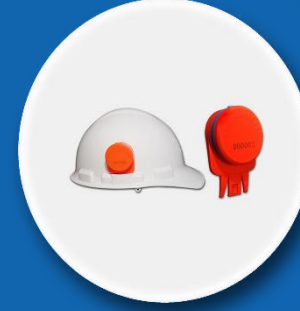
High Temperature
Sensor (850F) (BLE)



Vibration & Motion
Sensor (BLE)



Belt Sensor with Man-down
and SOS button (BLE)



Helmet Sensor with Man-down
and SOS button (BLE)



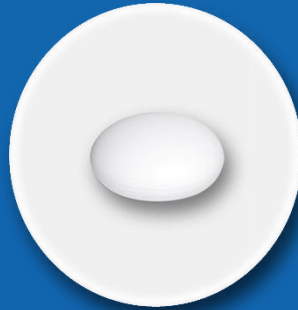
Slim Asset Tag
(BLE)



Combo Sensor (BLE)
(Temp/Humidity, light, air
quality)



Light Sensor
(BLE)



Water Leak Sensor
(BLE)



Power Sensor (voltage
& current) (BLE)



Magnetic Contact
(BLE)



Wireless Site Emergency
Event Notification (BLE)

Plug & Play Industrial IoT Devices



CO2 (Carbone Dioxide)
Gas Sensor (BLE)



H2S (Hydrogen Sulfide)
Gas Sensor (BLE)



NO2 (Nitrogen Dioxide)
Gas Sensor (BLE)



SO2 (Sulfur Dioxide)
Gas Sensor (BLE)



IAQ (Indoor Air Quality)
Sensor (BLE)



RESPIRR (Respiratory
Irritant, Air Quality) Sensor
(BLE)



O3 (Ozone) Sensor (BLE)



ETOH (Ethanol)
Gas Sensor (BLE)



Smoke Sensor (BLE)



Methane Detector
Sensor (BLE)



IR Motion Sensor (BLE)



Environment Sensor
(Temp/humidity, air
quality & pressure) (LoRa)

Plug & Play Industrial IoT Devices



Temperature/Humidity
Sensor (LoRa)



Liquid Level Sensor
(LoRa)



Water Leak Sensor
(LoRa)



Contact Sensor
(LoRa)



Personnel Tag (GPS &
Motion) (LoRa)



RS-485 (Modbus) to
LoRa WAN converter



GPS Vehicle Tag



GPS Container Tag

Plug & Play Industrial IoT Devices

IoT Cloud Connectivity



Location Router
(BLE)



IoT Gateway
(BLE)



Mini Wi-Fi IoT Gateway
(BLE)



Indoor IoT Gateway
(LoRa)



Outdoor IoT Gateway
(LoRa)



3

Why Dominate Smart Site?

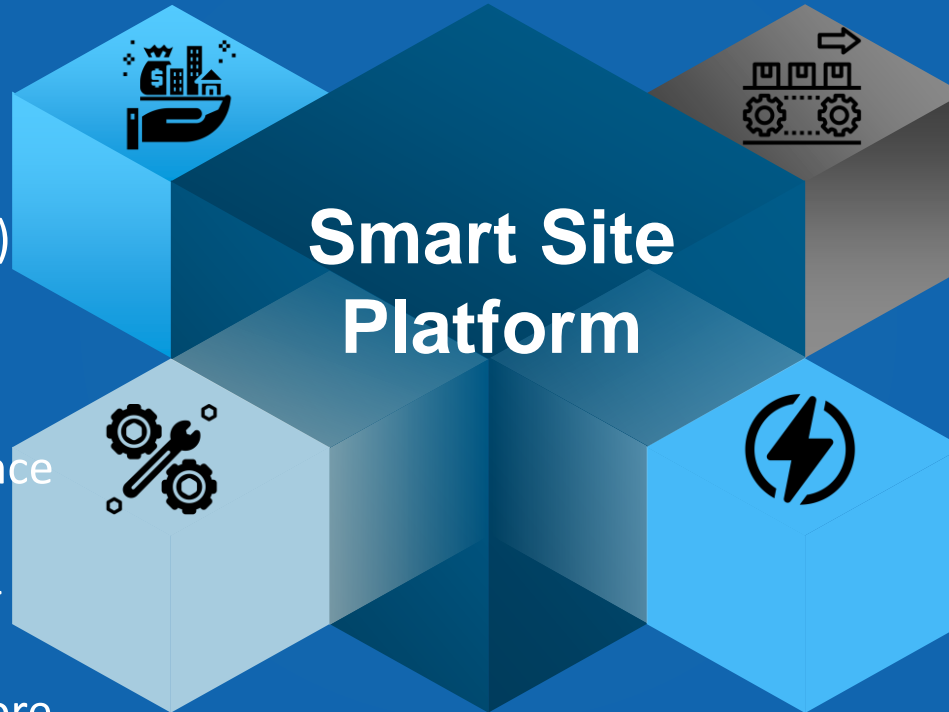
Key Value Drivers of Dominate Smart Site Digital Transformation Adoption

Asset

- Enhanced visibility & control.
- Asset Lifecycle extension.
- Optimize asset utilization.
- Improve return on asset (ROA)

Maintenance

- Real-time visibility of maintenance operation.
- Links maintenance team to real-time data.
- Reduce wrench time and get more maintenance done with fewer resources.



Production

- Faster production bottleneck detection.
- Operating costs reduction.
- Reduction in unexpected production downtimes.
- Enhance labor productivity growth.

Environment

- Energy usage reduction.
- Safety and compliance.
- Harness environment data with detailed analysis.

Why Dominate Industrial IoT?

Key System Features

- End-to-end turnkey IoT Solutions SaaS or on-premise installations.
- Quick learning curve with minimal operation disruptions.
- Plug & play, pre-configured and ready to go IoT hardware.
- Technology agnostic with quick DIY hardware installation.
- Mobile-enabled (iOS & Android).
- End-to-end security.

Zero Investment & Risks

- Low-cost bundled hardware & software monthly subscriptions.
- Accelerate time to value with no upfront costs or CAPEX.
- No long-term contract.

Worry-free Support

- Online knowledge base access.
- Dedicated consultants.
- Phone & Email support.
- Data migration.

Our Goal

Partner with our clients to transform their organizations in the ways that matter most to them.

This means embedding digital analytics and design into core processes and mind-sets; building capabilities that help organizations and people to thrive in an ever-changing context; and developing excellence in execution to ensure that actions translate into outcomes, quickly and sustainably.





- +1-678-387-3877
- www.DominateSmartSite.com
- sales@DominateSmartSite.com
- facebook.com/DominateSmartSite
- linkedin.com/company/dominatesmartsite

