



**DominateSmartSite**  
Transforming the way industries work



# Smart Environment Monitoring

Continuous monitoring of you most critical environment to ensure safety and compliance.

# Smart Environment Monitoring

Continuous monitoring of you most critical environment to ensure safety and compliance.

## Collect, analyze, Act!

- Temperature & Humidity Sensor
- Vibration & Motion Sensor
- Water Leak Sensor
- Air Quality, Smoke & Dust Sensors
- CO, CO<sub>2</sub>, H<sub>2</sub>S, NO<sub>2</sub>, SO<sub>2</sub>, O<sub>3</sub>, Ethanol & Methane Sensors
- Current & Voltage Sensor
- PIR Sensor
- Contact Sensor
- Ambient Light Sensor
- Push Button Sensor



# Real-time Environment Dashboards



# Real-time Sensor Dashboard



# Transforming Sensor data Insight into Actions!



# End-to-End Security

## We Take Security Seriously!

Through unique device identification, system provides secure environment of trusted devices and communications.

Authentication is enforced prior to communication for proof-of-origin of data. Transport-level security helps prevent corruption. Role-based and user-based access control manages cloud and mobile access.

- Role and user-based access control
- HTTPS point-to-point connection
- Message integrity, confidentiality and replay protection
- Node authenticity
- AES 128 counter mode
- OMAC1 message integrity
- Transport-level security



# Plug & Play Industrial IoT Hardware

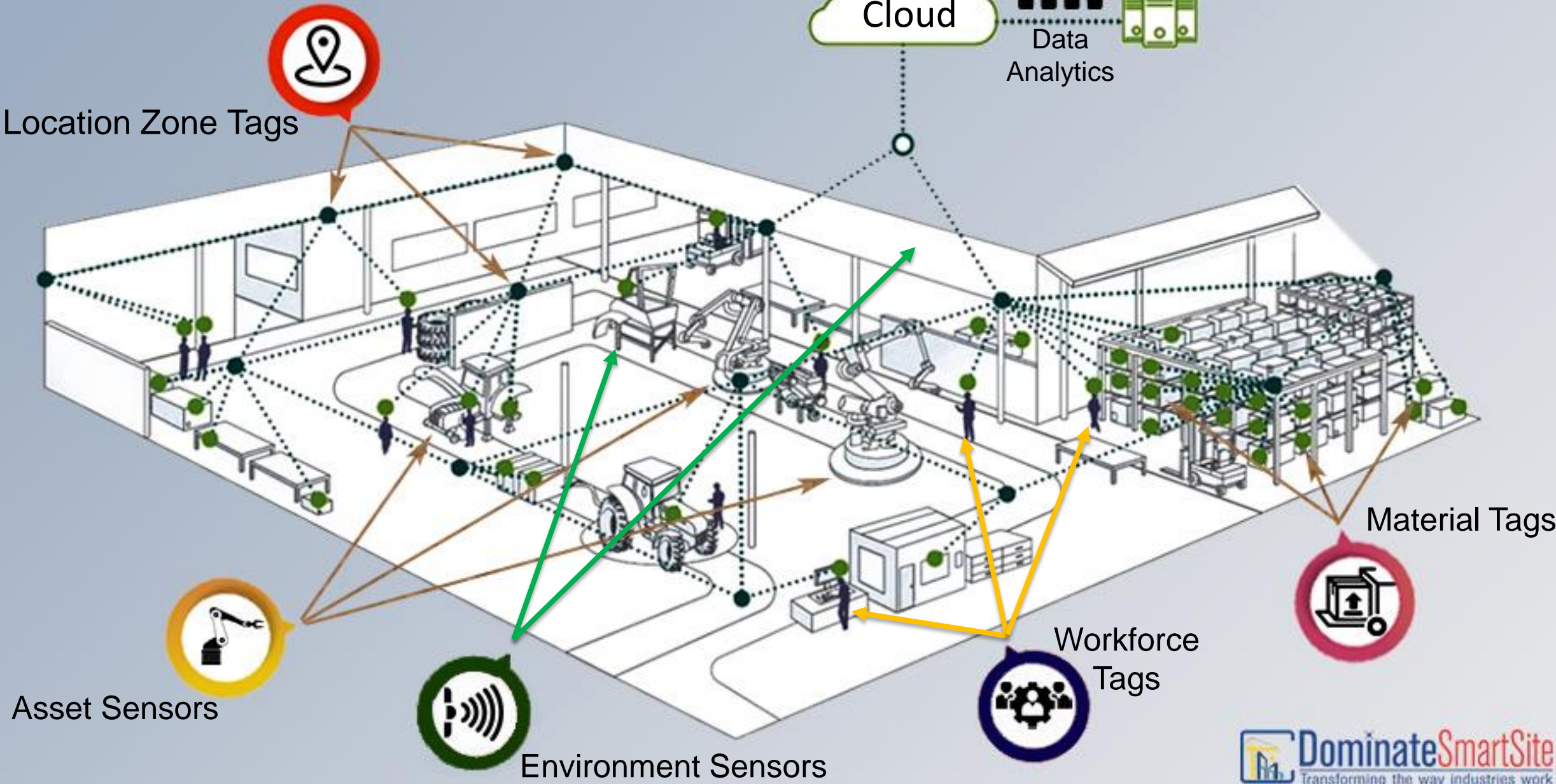
**IoT That's Ready to Use.  
Ready to Scale.**

Pre-configured IoT hardware designed for harsh industrial environment without a need for AC power or network connection enables your operation to be IoT ready within days.

- No AC Power Required. Runs on long-lasting Battery (12 months).
- No Internet Connection Required (creates its own BLE mesh network).
- Quick Installation and Expansion (less than 2 minutes per device).
- Read Range of Up to 100 Meters (300 ft)
- IP67 Ratings (water & dust proof)
- High Availability with No Single Point of Failure



# Wireless Industrial IoT Site Connectivity





# Plug & Play Industrial IoT Devices



Temperature/Humidity  
Sensor (BLE)



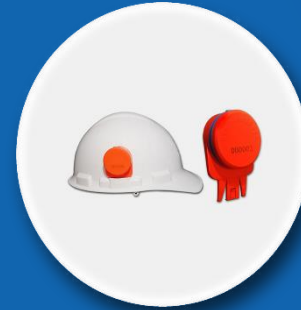
High Temperature  
Sensor (850F) (BLE)



Vibration & Motion  
Sensor (BLE)



Belt Sensor with Man-down  
and SOS button (BLE)



Helmet Sensor with Man-down  
and SOS button (BLE)



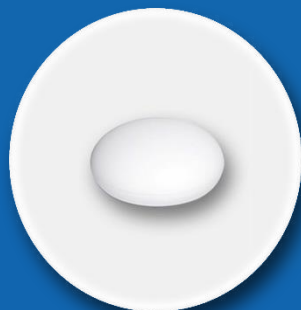
Slim Asset Tag  
(BLE)



Combo Sensor (BLE)  
(Temp/Humidity, light, air  
quality)



Light Sensor  
(BLE)



Water Leak Sensor  
(BLE)



Power Sensor (voltage  
& current) (BLE)



Magnetic Contact  
(BLE)



Wireless Site Emergency  
Event Notification (BLE)

# Plug & Play Industrial IoT Devices



CO2 (Carbone Dioxide)  
Gas Sensor (BLE)



H2S (Hydrogen Sulfide)  
Gas Sensor (BLE)



NO2 (Nitrogen Dioxide)  
Gas Sensor (BLE)



SO2 (Sulfur Dioxide)  
Gas Sensor (BLE)



IAQ (Indoor Air Quality)  
Sensor (BLE)



RESPIRR (Respiratory  
Irritant, Air Quality) Sensor  
(BLE)



O3 (Ozone) Sensor (BLE)



ETOH (Ethanol)  
Gas Sensor (BLE)



Smoke Sensor (BLE)



Methane Detector  
Sensor (BLE)



IR Motion Sensor (BLE)



Environment Sensor  
(Temp/humidity, air  
quality & pressure) (LoRa)

# Plug & Play Industrial IoT Devices



Temperature/Humidity  
Sensor (LoRa)



Liquid Level Sensor  
(LoRa)



Water Leak Sensor  
(LoRa)



Contact Sensor  
(LoRa)



Personnel Tag (GPS &  
Motion) (LoRa)



RS-485 (Modbus) to  
LoRa WAN converter



GPS Vehicle Tag



GPS Container Tag

# Plug & Play Industrial IoT Devices

## IoT Cloud Connectivity



Location Router  
(BLE)



IoT Gateway  
(BLE)



Mini Wi-Fi IoT Gateway  
(BLE)







Indoor IoT Gateway  
(LoRa)



Outdoor IoT Gateway  
(LoRa)



-  +1-678-387-3877
-  [www.DominateSmartSite.com](http://www.DominateSmartSite.com)
-  [sales@DominateSmartSite.com](mailto:sales@DominateSmartSite.com)
-  [facebook.com/DominateSmartSite](https://facebook.com/DominateSmartSite)
-  [linkedin.com/company/dominatesmartsite](https://linkedin.com/company/dominatesmartsite)

